



X-CONE Cone Management System

THE PROBLEM

Currently, the deployment and collection of traffic cones is **typically handled manually**.

This a „high risk job“ and it is...

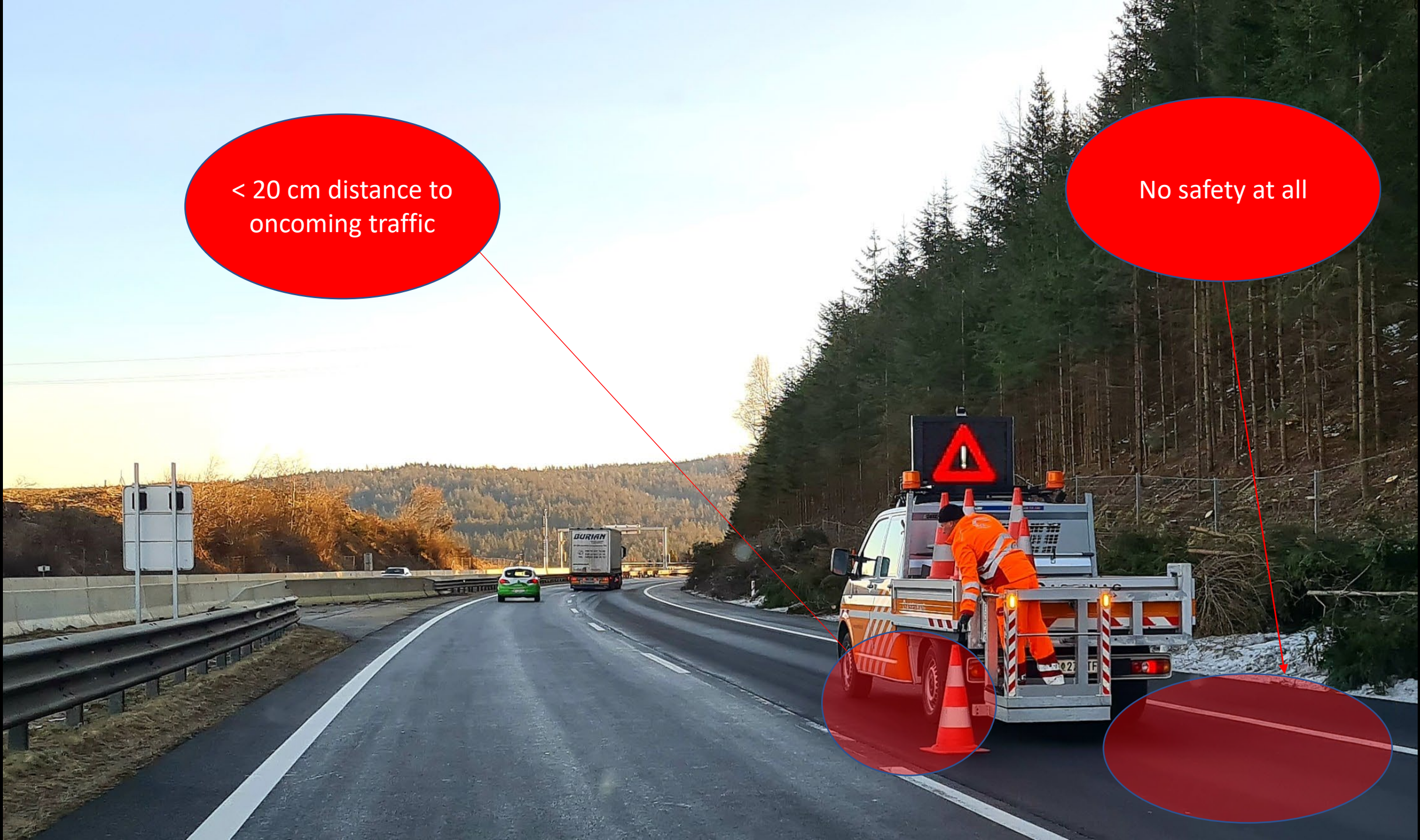
...**labour intensive** for contractors

...**dangerous** to the lives of workers



< 20 cm distance to
oncoming traffic

No safety at all

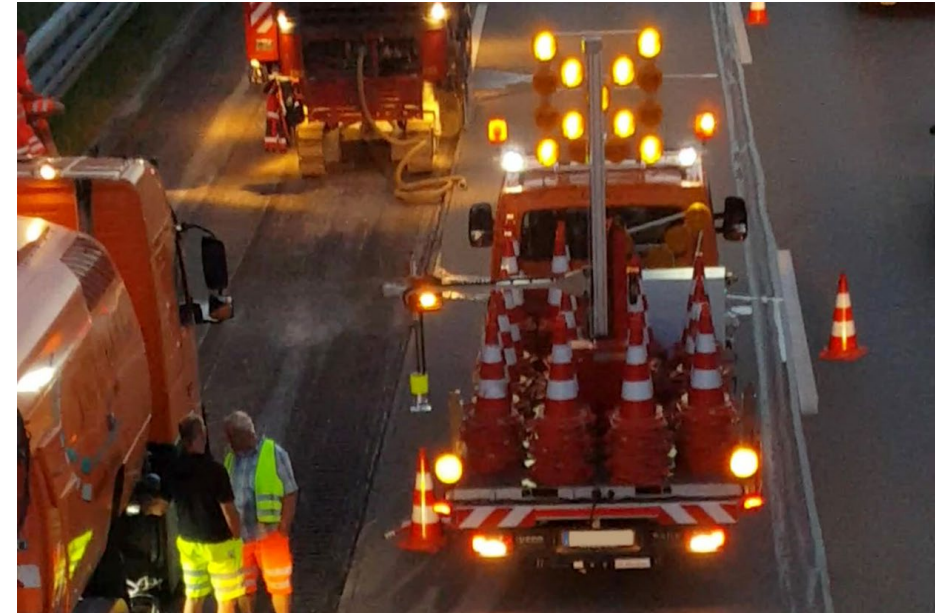


X-CONE WORKS FULLY AUTOMATIC OPERATED BY THE DRIVER ONLY

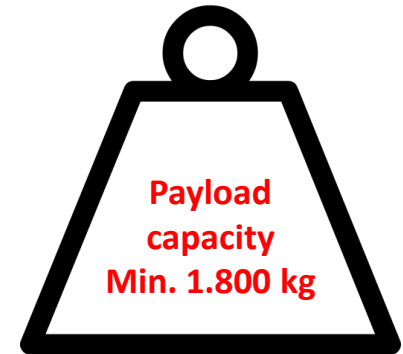


TECHNICAL DETAILS

Dimensaions	3.501 x 2.080 mm (LxW)
Height	3.000 mm
Max. Working width	687 mm
Weight without cones	480 kg
Number of stacks	17 stacks
Cone capacity per stack	up to 13 pcs. (depends on cone design)
Cone capacity total	up to 221 pcs. (depends on cone design)
Cone spacing	≥ 10 m with automatic mode ≤ 10 m with manual mode
Working speed	5 – 6 Leitkegel per minute
Control panel	Touchscreen
Power supply	12V DC directly from the truck
Temperature range	-10°C to + 50°C

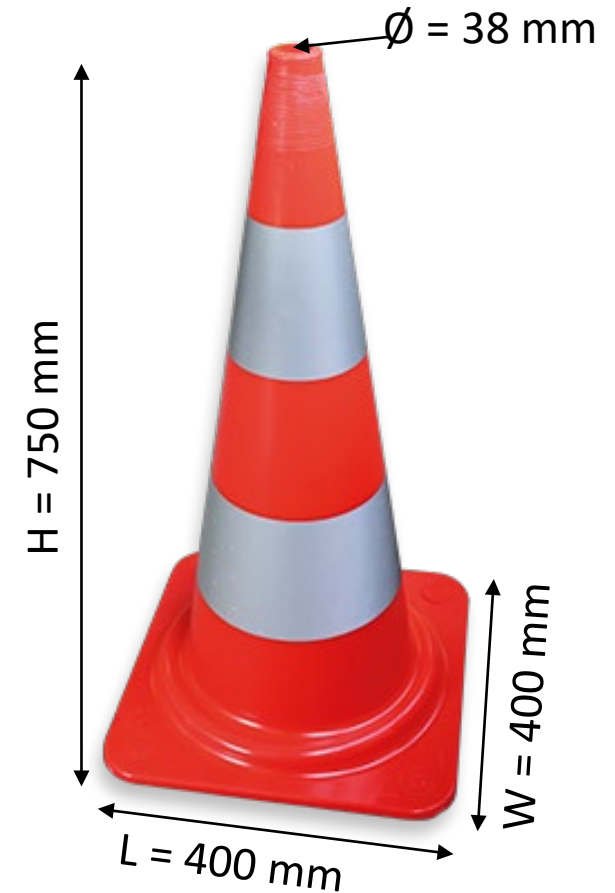


VEHICLE REQUIREMENTS

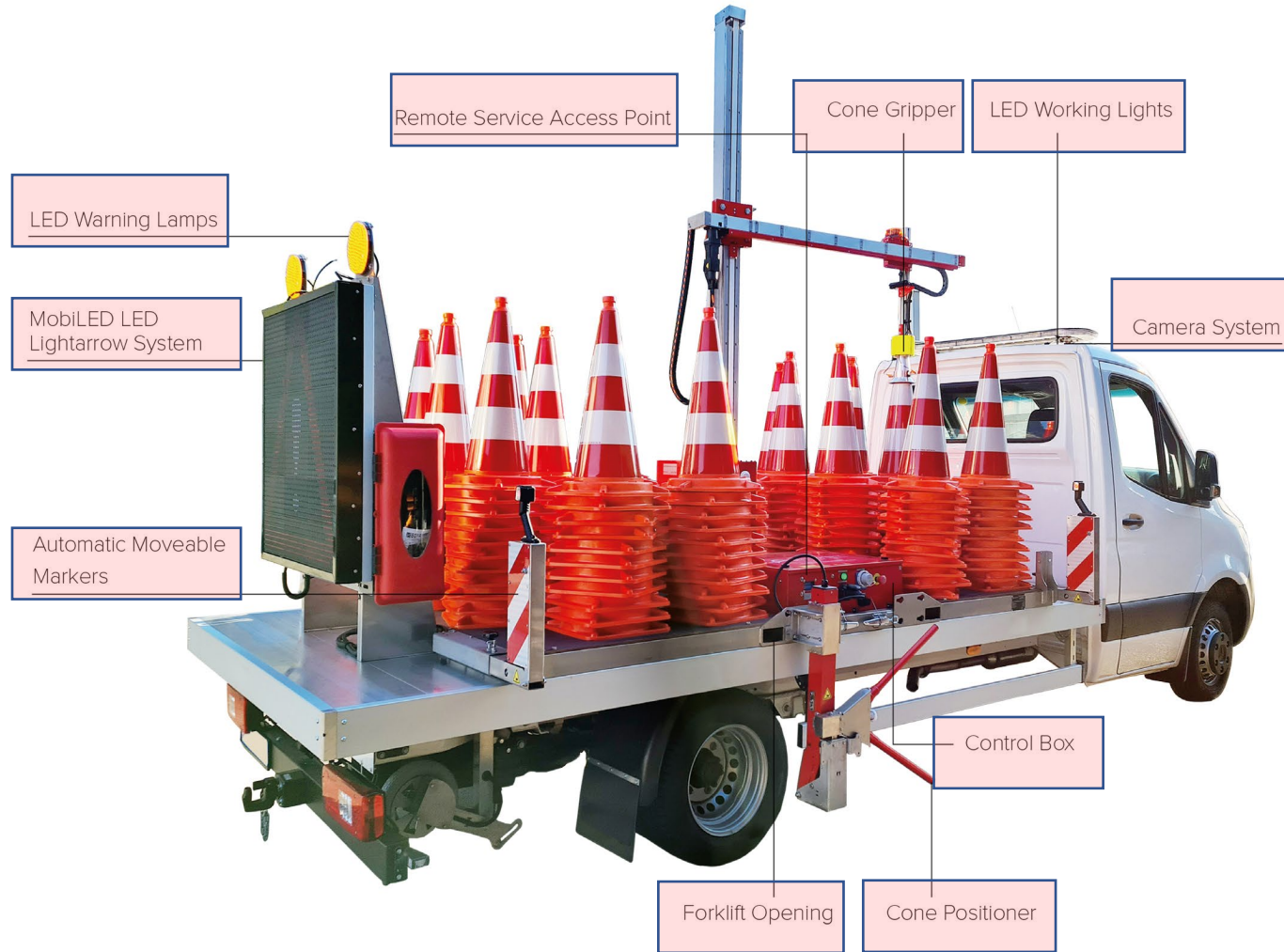


WHICH ONE IS THE BEST CONE TO USE?

Height	750 mm
Base length	approx. 400 mm
Base width	approx. 400 mm
Hole on top	Ø approx. 38 mm
Weight	Approx. 4,5 kg



SYSTEM COMPONENTS



CONTROL PANEL



HOW FAST CAN X-CONE OPERATE?



EXAMPLE:

Cone spacing: 25m
Cone capacity: 224 Stk.



Max. Working speed: 9 km/h
Max. length of workzone: 5.600 m
Max time for workzone: ca. 37 minutes



BENEFITS



SAFE

X-Cone can be operated from the drivers cab



FULLY AUTOMATIC

X-Cone works fully automatic



FLEXIBLE

Quick and easy assembling/ disassembling



FAST

X-Cone can handle up to 6 cones per minute

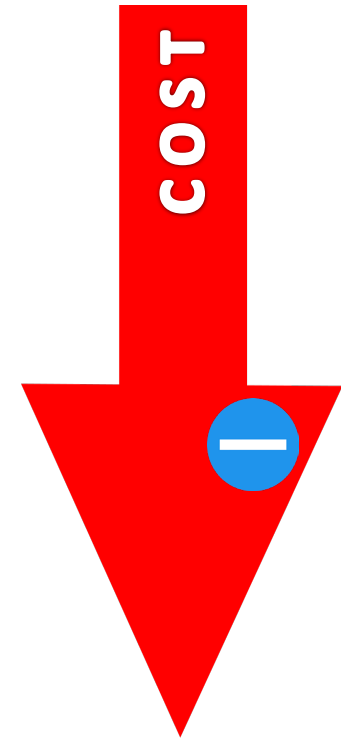
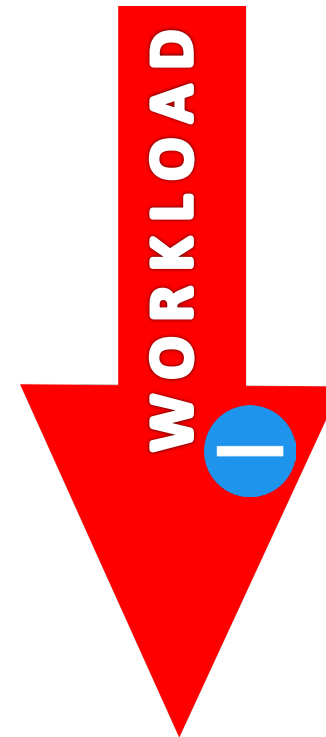
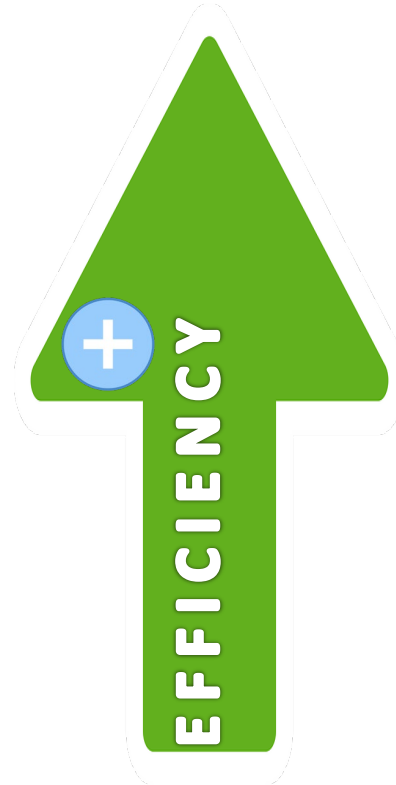
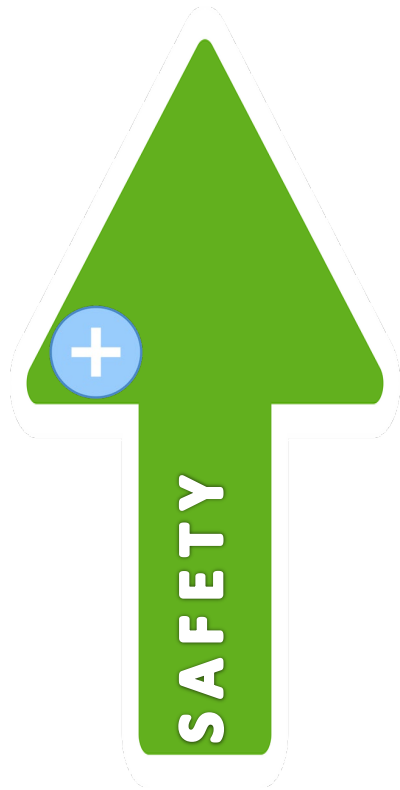


MULTIDIRECTIONAL

Deploy/ collect cones on each side of the vehicle and in as well as against traffic flow direction



BENEFITS - COST



REFERENCES



Where to find X-Cone?



www.traffic-safety-services.com



AUSTRIA



PR CHINA



Schweiz



www.traffic-safety-services.com



THAILAND



JAPAN



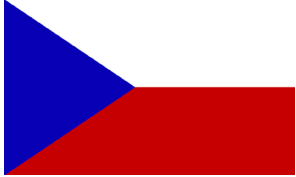
GERMANY



www.traffic-safety-services.com



CZECH REPUBLIC



SLOWAKIA



SLOVENIA



X-CONE

Cone
Management
System

MADE IN





TRAFFIC SAFETY
SERVICES BY JANSCHITZ

www.traffic-safety-services.com

Safety is OUR BUSINESS